



DE

Bedienungsanleitung

Handsender HSD 2 BiSecur

EN

Operating instructions

Hand transmitter HSD 2 BiSecur

FR

Instructions d'utilisation

Emetteur HSD 2 BiSecur

+

NL

NEDERLANDS

ES

ESPAÑOL

IT

ITALIANO

PT

PORTUGUÊS



Contents

1	About these instructions	19	8	Reset	27
2	Safety instructions	19	8.1	Setting the fixed code 868 MHz.....	28
2.1	Intended use	19	9	Fixing to a keychain	29
2.2	Safety instructions for operating the hand transmitter.....	20	10	LED display	30
3	Scope of delivery.....	22	11	Cleaning	31
4	Description of the hand transmitter HSD 2 BiSecur	22	12	Disposal	32
5	Initial start-up	23	13	Technical data	32
5.1	Inserting the battery	23			
6	Operation	24			
7	Learning and inheriting / transmitting a radio code	25			
7.1	Teaching in a radio code	26			
7.2	Mixed operation / BiSecur and fixed code 868 MHz.....	27			

Dissemination as well as duplication of this document and the use and communication of its content are prohibited unless explicitly permitted. Noncompliance will result in damage compensation obligations. All rights reserved in the event of patent, utility model or design model registration. Subject to changes.

Dear Customer,

We thank you for choosing a quality product from our company.

1 About these instructions

Read through all of the instructions carefully, as they contain important information about the product. Pay attention to and follow the instructions provided, particularly the safety instructions and warnings.

Further information about handling the hand transmitter can be found on the Internet at **www.hoermann.com**

Please keep these instructions in a safe place and make sure that they are available to all users at all times.

2 Safety instructions

2.1 Intended use

The HSD 2 BiSecur is a unidirectional transmitter for operators and their accessories. It can be operated with both the BiSecur radio and the fixed code 868 MHz.

Other types of application are prohibited. The manufacturer is not liable for damage caused by improper use or incorrect operation.

2.2 Safety instructions for operating the hand transmitter



WARNING

Danger of injury during door travel

Persons may be injured by door travel if the hand transmitter is actuated.

- ▶ Make sure that the hand transmitters are kept away from children and can only be used by people who have been instructed on how the remote-control door functions!
- ▶ If the door has only one safety device, only operate the hand transmitter if you are within sight of the door!
- ▶ Only drive or pass through remote control door systems if the door is in the Open end-of-travel position!
- ▶ Never stand in the door's area of travel.
- ▶ Please note that unwanted door travel may occur if a hand transmitter button is accidentally pressed (e.g. if stored in a pocket / handbag).



CAUTION

Danger of injuries due to unintended door travel

- ▶ See warning in section 7

ATTENTION**Malfunction due to environmental influences**

Non-compliance with these instructions can impair function!

Protect the hand transmitter from the following conditions:

- Direct sunlight (permissible ambient temperature: 0 °C to +60 °C)
- Moisture
- Dust

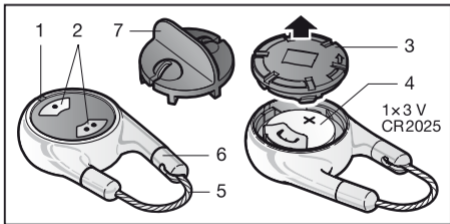
NOTES:

- If there is no separate garage entrance, perform all programming changes and extensions of radio systems from inside the garage.
- After programming or extending the radio system, check the functions.
- Only use original components when putting the radio system into service or extending it.
- Local conditions may affect the range of the radio system.
- When used at the same time, GSM 900 mobile phones can affect the range.

3 Scope of delivery

- Hand transmitter HSD 2 BiSecur
- 1× 3 V battery, type: CR2025
- Key
- Operating instructions

4 Description of the hand transmitter HSD 2 BiSecur



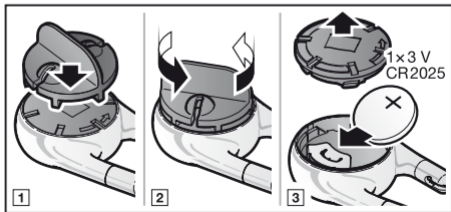
- 1 LED, bi-colour
- 2 Hand transmitter buttons
- 3 Battery compartment cover

- 4 Battery
- 5 Key cable
- 6 Bolt sleeve
- 7 Key for
 - opening / closing the battery compartment cover and
 - tightening / loosening the screw-in sleeves

5 Initial start-up

After inserting the battery, the hand transmitter HSD 2 BiSecur is ready for operation.

5.1 Inserting the battery



ATTENTION**Destruction of the hand transmitter by leaking batteries**

Batteries can leak and destroy the hand transmitter.

- ▶ Remove the battery from the hand transmitter if it is out of use for a long period of time.

6 Operation

NOTE:

If the radio code for the taught-in hand transmitter was copied from another hand transmitter, the hand transmitter button must be pressed a second time during initial start-up.

Each hand transmitter button is assigned to a radio code. Press the button of the hand transmitter whose radio code you want to transmit.

- The radio code is transmitted and the LED is illuminated blue for 2 seconds.

NOTE:

If the battery is almost empty, the LED flashes red twice

- before transmitting the radio code.
 - ▶ The battery **should be** replaced soon.

- b. and the radio code is not transmitted.
- ▶ The battery **must be** replaced immediately.

7 Learning and inheriting / transmitting a radio code



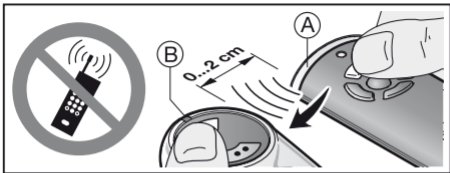
CAUTION

Danger of injuries due to unintended door travel

Unintended door travel may occur while teaching in the radio system.

- ▶ Pay attention that no persons or objects are in the door's area of travel when teaching in the radio code.

7.1 Teaching in a radio code



1. Press the hand transmitter button on hand transmitter **A**, whose radio code is to be inherited, and keep it pressed.
 - The radio code is transmitted and the LED is illuminated blue for 2 seconds then goes out.
 - After 5 seconds, the LED alternates flashing in red and blue; the radio code is transmitted.
2. Place the hand transmitter **B** into which you want to teach in the radio code, to its left.
3. Press the hand transmitter button to which the new radio code is to be allocated, and keep it pressed.
 - The LED will flash slowly in blue.
 - If the radio code is recognised, the LED flashes quickly in blue.
 - After 2 seconds, the LED goes out.

NOTE:

You have 15 seconds to inherit/transmit the code. The process must be repeated if the radio code is not successfully inherited/transmitted within this time.

7.2 Mixed operation / BiSecur and fixed code 868 MHz

If the BiSecur radio has been set, mixed operation is possible, i.e. existing hand transmitters with an 868 MHz fixed code (grey hand transmitters with blue buttons or the device designation HSD2-868) can be taught in from the BiSecur hand transmitter.

8 Reset

Each hand transmitter button is assigned to a new radio code by means of the following steps.

1. Open the battery compartment cover and remove the battery for 10 seconds.
2. Press a hand transmitter button and keep it pressed.
3. Insert the battery.
 - The LED slowly flashes in blue for 4 seconds.
 - The LED flashes rapidly in blue for 2 seconds.
 - The LED is illuminated blue for a long time.
4. Release the hand transmitter button.

All radio codes are newly assigned.

NOTE:

If the hand transmitter button is released prematurely, no new radio codes are assigned.

5. Close the battery compartment cover.

8.1 Setting the fixed code 868 MHz

If immediately following the device reset, the hand transmitter button remains pressed, the fixed code 868 MHz will be activated.

- The LED slowly flashes in red for 4 seconds.
- The LED flashes rapidly in red for 2 seconds.
- The LED is illuminated red for a long time.

All radio codes are newly assigned.

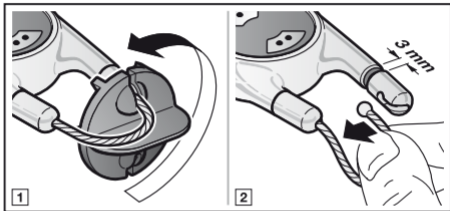
NOTE:

If the hand transmitter button is released prematurely, the BiSecur radio will remain active.

Further information about operating the hand transmitter with the fixed code 868 MHz can be found on the Internet at www.hoermann.com

9 Fixing to a keychain

The hand transmitter HSD 2 BiSecur is fastened to the keychain as seen in the photo.



10 LED display

Blue (BU)

Condition	Function
Illuminated for 2 seconds	A radio code is being transmitted
Flashes slowly	Hand transmitter is in the learn mode
Flashes quickly after slow flashing	A valid radio code was detected during learning
Flashes slowly for 4 seconds Flashes quickly for 2 seconds Illuminated long	Device reset is being performed or completed

Red (RD)

Condition	Function
Flashes 2x	The battery is almost empty

Blue (BU) and Red (RD)

Condition	Function
Flashing alternately	Hand transmitter is in the inherit / transmit mode

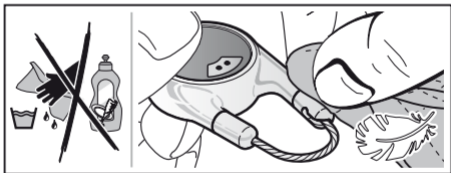
11 Cleaning

ATTENTION

Damaging the hand transmitter by faulty cleaning

Cleaning the hand transmitter with unsuitable cleaning agents can damage the hand transmitter housing as well as the hand transmitter buttons.

- ▶ Clean the hand transmitter with a dry, soft and anti-static cloth.



12 Disposal

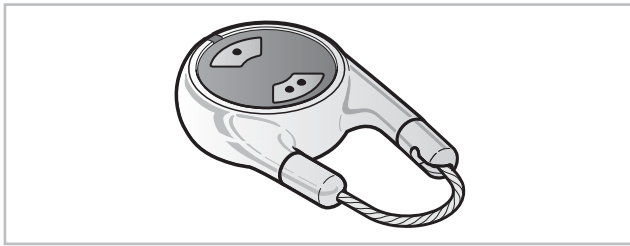


Electrical and electronic devices, as well as batteries, may not be disposed of in household rubbish. They must be returned to the appropriate recycling facilities.



13 Technical data

Type	Hand transmitter HSD 2 BiSecur
Frequency	868 MHz
Power supply	1 × 3 V battery, type: CR2025
Perm. ambient temperature	0 °C to +60 °C
Protection category	IP 20

ENGLISH

Dear Customer,
We thank you for choosing a quality product from our company.

1 About these instructions

Read through all of the instructions carefully, as they contain important information about the product. Pay attention to and follow the instructions provided, particularly the safety instructions and warnings.

2 Safety instructions

2.1 Intended use

The HSD 2 BiSecur is a unidirectional transmitter for operators and their accessories. It can be operated with both the BiSecur radio and the fixed code 868 MHz.

Other types of application are prohibited. The manufacturer is not liable for damage caused by improper use or incorrect operation.

2.2 Safety instructions for operating the hand transmitter

⚠ WARNING

Danger of injury during door travel

Persons may be injured by door travel if the hand transmitter is actuated.

- ▶ Make sure that the hand transmitters are kept away from children and can only be used by people who have been instructed on how the remote-control door functions!
- ▶ If the door has only one safety device, only operate the hand transmitter if you are within sight of the door!
- ▶ Only drive or pass through remote control door systems if the door is in the Open end-of-travel position!
- ▶ Never stand in the door's area of travel.
- ▶ Please note that unwanted door travel may occur if a hand transmitter button is accidentally pressed (e.g. if stored in a pocket / handbag).

⚠ CAUTION

Danger of injuries due to unintended door travel

- ▶ See warning in section 5

ATTENTION

Functional impairment due to environmental influences

Non-compliance with these instructions can impair function!

Protect the hand transmitter from the following conditions:

- Direct sunlight (permissible ambient temperature: 0 °C to +60 °C)
- Moisture
- Dust

NOTES:

- If there is no separate garage entrance, perform all programming changes and extensions of radio systems from inside the garage.
- After programming or extending the radio system, check the functions.
- Only use original components when putting the radio system into service or extending it.
- Local conditions may affect the range of the radio system.
- When used at the same time, GSM 900 mobile phones can affect the range.

3 Setting the fixed code 868 MHz

All radio codes are newly assigned by the following steps:

1. Open the battery compartment cover and remove the battery for 10 seconds.
2. Press a hand transmitter button and keep it pressed.
3. Insert the battery.
 - The LED slowly flashes in blue for 4 seconds.
 - The LED flashes rapidly in blue for 2 seconds.
 - The LED is illuminated blue for a long time.
4. Keep the hand transmitter button pressed.
 - The LED slowly flashes in red for 4 seconds.
 - The LED flashes rapidly in red for 2 seconds.
 - The LED is illuminated red for a long time.

Fixed code 868 MHz is activated.

NOTE:

If the hand transmitter button is released prematurely, the BiSecur radio will remain active.

5. Close the battery compartment cover.

4 Operation

Each hand transmitter button is assigned to a radio code. Press the button of the hand transmitter whose radio code you want to transmit.

- The LED lights up red and the radio code is transmitted.

NOTE:

If the battery is almost empty, the LED flashes red twice

- a. before transmitting the radio code.
 - ▶ The battery **should be** replaced soon.
- b. and the radio code is not transmitted.
 - ▶ The battery **must be** replaced immediately.

5 Learning and inheriting a radio code

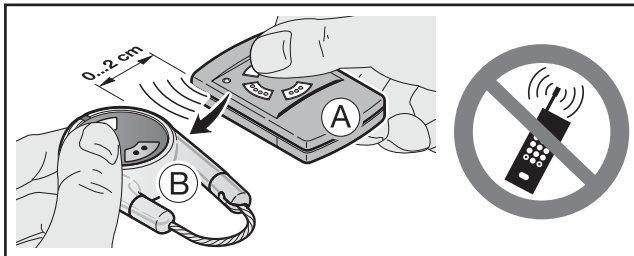
⚠ CAUTION

Danger of injuries due to unintended door travel

Unintended door travel may occur while teaching in the radio system.

- ▶ Pay attention that no persons or objects are in the door's area of travel when teaching in the radio system.

5.1 Teaching in a radio code



1. Press the hand transmitter button on hand transmitter **A**, whose radio code is to be inherited, and keep it pressed.
 - The LED lights up red and the radio code is transmitted.
2. Place the hand transmitter **B** into which you want to teach in the radio code, to its left.
3. Press the hand transmitter button to which the new radio code is to be allocated, and keep it pressed.
 - The LED flashes slowly in red.
 - If the radio code is recognised, the LED flashes quickly in red.
 - After 2 seconds, the LED goes out.

NOTE:

You have 15 seconds to inherit the code. The process must be repeated if the radio code is not successfully inherited within this time.

6 Reset

NOTE:

The BiSecur radio system is set again after a device reset.

Each hand transmitter button is assigned to a new radio code by means of the following steps.

1. Open the battery compartment cover and remove the battery for 10 seconds.
2. Press a hand transmitter button and keep it pressed.
3. Insert the battery.
 - The LED slowly flashes in blue for 4 seconds.
 - The LED flashes rapidly in blue for 2 seconds.
 - The LED is illuminated blue for a long time.
4. Release the hand transmitter button.

All radio codes are newly assigned.

NOTE:

If the hand transmitter button is released prematurely, no new radio codes are assigned.

5. Close the battery compartment cover.

To set the fixed code 868 MHz, see section 3.

7 LED display

Blue (BU)

Condition	Function
Flashes slowly for 4 seconds	Device reset is being performed or completed
Flashes quickly for 2 seconds	
Illuminated long	

Red (RD)

Condition	Function
Flashes twice	The battery is almost empty
Flashes slowly	The hand transmitter is in the learn mode
Flashes quickly	The hand transmitter has learned the radio code
Illuminated	The radio code is being sent