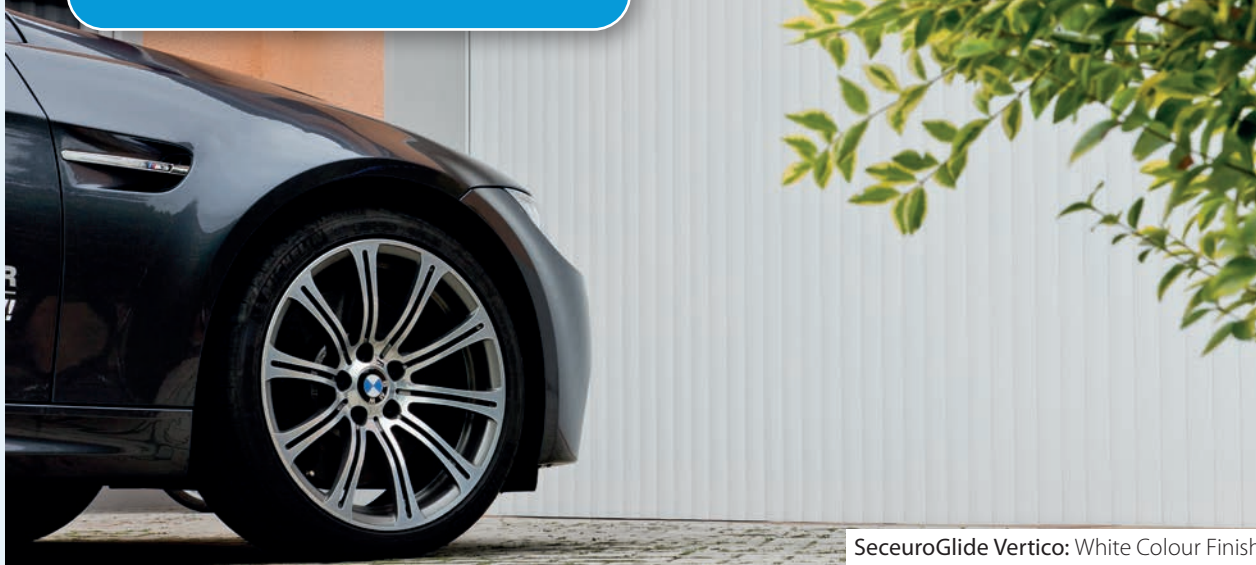


**SeceuroGlide | Vertico**  
Secure, Vertical, Insulated Garage Doors



SeceuroGlide Vertico: White Colour Finish

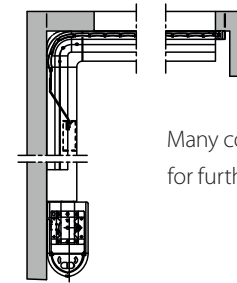


SeceuroGlide Vertico: White Colour Finish

Our lateral running door offers a unique and stylish solution for any garage design.

The Vertico makes the most of your garage space and creating a design feature for your home. Vertico is made from aluminium foam filled slats which link together to ensure exceptionally smooth operation and insulation, making the Vertico an ideal choice for heated garages and workshops. The vertical design offers partial opening ensuring minimal heat-loss and provides a convenient solution for pedestrian or bicycle access.

## Configuration examples



Many configurations are possible, for further examples, please scan the QR code.



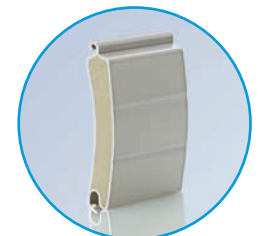
### Space Saving

Park next to door without affecting the door's operation.



### Headroom

Only 50 mm of headroom required.



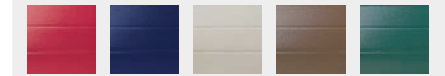
### Insulated Slats

CFC-free foam-filled aluminium slat design.

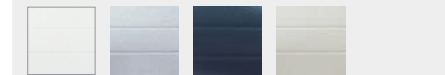
Unit Width (mm)

Standard Colours	Unit Height (mm)	Unit Width (mm)																				
		2000	2200	2400	2600	2800	3000	3200	3400	3600	3800	4000	4200	4400	4600	4800	5000	5200	5400	5600	5800	6100
Standard Colours	2000	3457	3597	3668	3740	388	4031	4175	4246	4390	4463	4606	4745	4815	4955	5030	5169	5309	5379	5580	5780	6078
	2200	3531	3670	3743	3816	3956	4093	4236	4308	4449	4518	4657	4796	4865	4999	5070	5208	5346	5416	5614	5814	6113
	2400	3738	3882	3956	4027	4175	4320	4466	4535	4683	4759	4899	5050	5123	5272	5346	5492	5641	5715	5925	6139	6457
	2600	3863	4009	4078	4148	4290	4432	4576	4645	4791	4862	5006	5152	5223	5365	5441	5585	5729	5802	6019	6230	6554
	2800	4088	4236	4308	4381	4529	4676	4821	4896	5043	5113	5262	5412	5487	5634	5710	5858	6012	6083	6310	6532	6872
	3000	4246	4390	4463	4534	4679	4821	4964	5038	5182	5255	5399	5539	5607	5746	5820	5961	6100	6169	6399	6630	6970

STANDARD COLOURS



Burgundy (RAL 3004) Navy Blue (RAL 5011) Light Beige (BS 08B17) Brown (RAL 8014) Fir Green (RAL 6009)



White (RAL 9016) Silver Metallic (RAL 9006) Anthracite (RAL 7016) Light Grey (RAL 7038)

*Creamy White, Aluminium Grey and Metallic Grey are also available – please enquire.*

**Top rail:** White, Brown, Silver Metallic

VERTICO ACCESSORIES AND EXTRAS

IMAGE	DESCRIPTION	PROFILE	PRICE (£)	IMAGE	DESCRIPTION	PROFILE	PRICE (£)
ACCESSORIES				ACCESSORIES			
	Emergency safety release from outside, lockable per unit.	per unit	146.50		Additional hand transmitter (HS 2-M, 2 command 868 MHz)	per unit	107.66
	170x40mm extruded aluminium corner cover for reveal fix installation	per vertical M	43.10		Additional hand transmitter (HS 4-M, 4 command, 868 MHz)	per unit	180.11
	Window opening 50x150mm. Two super-imposed windows possible per slat CD77/SF, vision slat curtain with plexiglass inserts. Recommendation: Light-band/window opening: installation in every fourth slat in horizontal direction.	per window	34.53		Multi-function interior push button station with system plug. Functions:	per unit	357.10
	Coating design package: Special RAL coatings for guide channel, covers, turn radius and optional screen.	per unit	362.07		– Door status display, open-closed – Permanent lighting on-off – Operator, open-stop-close	per unit	138.10
					Surface-mounted key operated switch with system plug (29002/M) Flush-mounted version (29003/M)	per unit	136.53

SUPPLIED AS STANDARD WITH:

- Remote control motor unit including two transmitters
- Emergency unlocking from inside
- Galvanised floor rail

TECHNICAL OVERVIEW:

- Space requirement in the lintel area can be minimised to 50 mm
- Maximum unit width: 6100 mm
- Maximum unit height: 3050 mm
- Bottom track only 25 mm high
- Certified by TUV (Technical Inspection Authorities), produced according to DIN-EN safety standards

