



**ACCESSORIES**

Track extensions

Door brackets

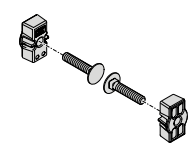
Brackets



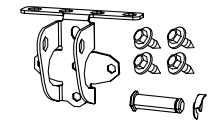
**Track extension set**  
Length 1096 mm, incl. ceiling bracket, long isolator chain (including magnet)  
#10460V000



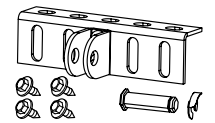
**Ceiling mounting unit set**  
for track MS 1,25 mm; incl. fixing material  
#1646V000



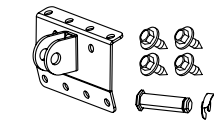
**Ceiling suspension insert**  
for angle profile use (width 18 mm) for fastening on the ceiling  
#S10178-00001



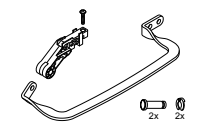
**Door bracket set**  
incl. screws and bolts one piece bracket  
#1650V000



**Door bracket set**  
incl. screws and bolts complete bracket  
#S10201-00001



**Door bracket set**  
incl. screws and bolts type H  
#S10228-00001



**Low headroom fitting**  
incl. pluggable adapter "back"  
#7044V000



**Door bracket**  
direct mounting track to ceiling incl. screws and bolts complete bracket  
#7045V000

**SERVICE-MODULE**

**SOMlink** #7040V000  
With intelligent control technology SOMlink (for dealers), there are additional options for easily adjusting features and parameters with a web app using your smartphone or tablet.



**TRANSMITTER**



**Pearl Vibe** #4019V000

- 4-command transmitter
- Bi-directional radio system, frequency: 868.95 MHz
- Efficient vibration motor for long battery life
- Reliable radio control system with good range (approx. 60 - 150 m)\*
- Sensible vibrating feedback
- 128 bit AES rolling code encryption
- Collision-resistant

**Matching accessories:**  
Holder for installing the hand-held transmitter in a car or on the wall can be delivered – just stick it on and screw it in.  
#4643V000

Holding clip for installing the hand-held transmitter on the sun visor in a vehicle.  
#S10092-00001

\* environment-dependent

**BI-DIRECTIONAL RADIO SYSTEM SOMloq2**

Guarantees reliable remote control with good range and direct feedback for increased safety and convenience.

Our new products, equipped with the bi-directional SOMloq2 radio system, transmits radio signals in both directions when the corresponding transmitter is used, e.g. Pearl Vibe feedback vibration.

**The system also offers:**

- Feedback of whether the sent command is being processed by the receiver
- The option of querying door positions/reception status
- Improved range and higher reliability due to the hop function, since the signal is actively forwarded by SOMloq2 receivers

- Maximum protection from hackers with 128 bit AES encryption with Rollingcode
- Auto-repeat function for comfortable opening while approaching the object
- Downward compatible with the Somloq Rollingcode radio system, making it possible to control existing operators and radio receivers



**TECHNICAL DATA**

Operator	S 9060 base+	S 9080 base+	S 9110 base+
Max. travel path	7,500 mm	7,500 mm	7,500 mm
Max. door width/door height	4,500 mm/2,500 mm	6,000 mm/2,500 mm	8,000 mm/2,500 mm
Sectional-, retractable-, canopy door			
Sectional-horizontal-, side-opening sectional-, side hinged door	2,500 mm/2,500 mm	2,500 mm/3,000 mm	2,500 mm/3,500 mm
Travel length	2,750 mm	2,750 mm	2,750 mm
Max. door weight	120 kg	160 kg	200 kg
Max. pulling and pressure force	600 N	800 N	1,100 N
Max. running speed	240 mm/s	210 mm/s	180 mm/s
Power consumption (standby)	< 1 W	< 1 W	< 1 W
Switch-on duration after S3 in %	40 %	40 %	40 %
Connection for warning light	Yes (DC 24 V/25 W)	Yes (DC 24 V/25 W)	Yes (DC 24 V/25 W)
Number of radio memory positions	40	40	40



DEEN #650620001 - 04/16. Literal errors, errors and technical changes excepted.



**SOMMER ANTRIEBS- UND FUNKTECHNIK GMBH**  
HANS-BÖCKLER-STR. 21-27 | D-73230 KIRCHHEIM/TECK  
PHONE +49 (0)7021/8001-0 | FAX +49 (0)7021/8001-100  
INFO@SOMMER.EU | WWW.SOMMER.EU

f SOMMERGMBH t SOMMER\_GMBH



**The intelligent garage door operator**  
Expandable with a wide range of additional equipment



# THE NEXT GENERATION OF OUR GARAGE DOOR OPERATORS

## QUALITY

- Universal drive for sectional doors, overhead doors, swing doors, canopy doors\*, side hinged doors\*, side-sectional doors and sliding doors
- Saves power: <1 watt standby
- Made in Germany
- Integrated LED technology: durable, energy-saving and efficient lighting

## SAFETY

- Motor with high automatic locking and active counter-pressure at all points in the event of an attempted break-in
- Connection option for battery pack for emergency operation in the event of a power failure
- Locking magnet for motor, locks in any position, even during ventilation function/partial opening (**Lock # 1651V000** available as an option)
- Thanks to the integrated emergency release, the carriage can be engaged and disengaged in any position
- Bi-directional, secure **SOMloq2** radio system



## FLEXIBILITY

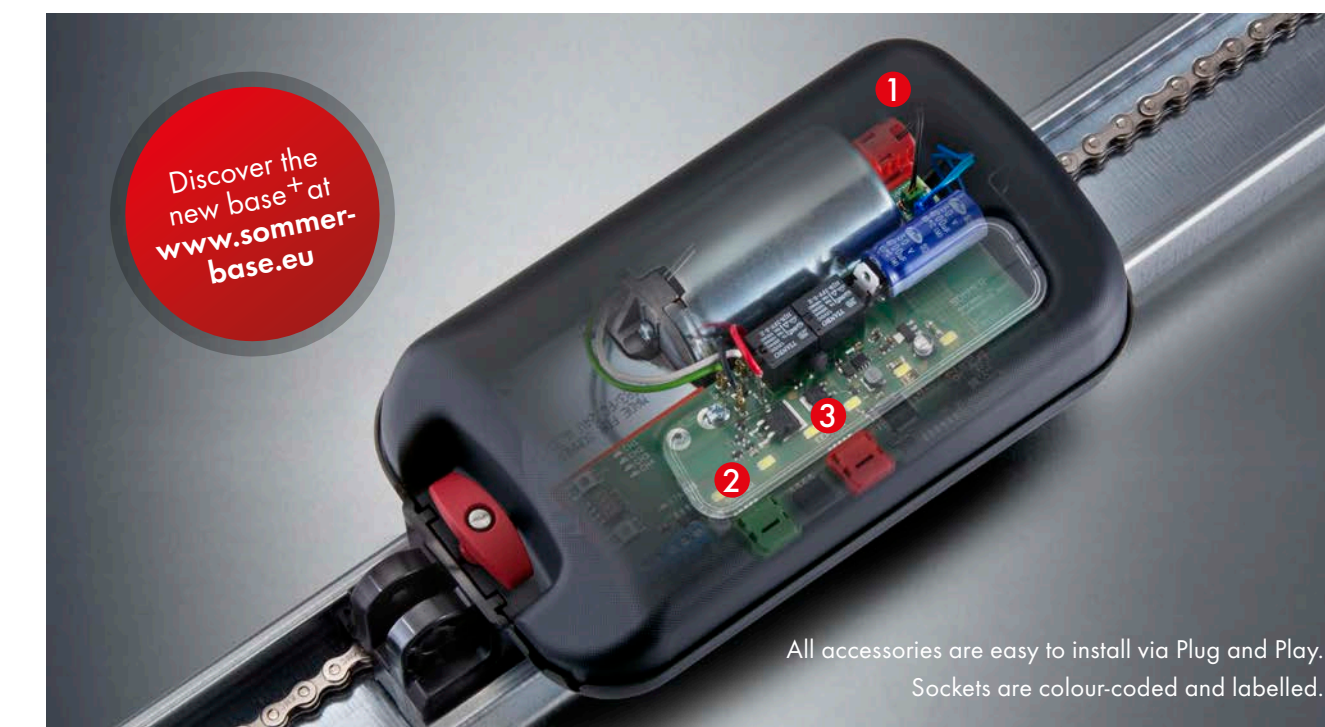
- Countless accessories for extension, e.g. **Memo** hand-held transmitter memory, **Senso** humidity sensor, **Lock** locking magnet, **Lumi base+** additional LED lighting and much more...
- Removable carriage without track disassembly
- Easy shortening or lengthening of the track possible (extension set # 10460V000)

## INTELLIGENCE

- Automatic learning process: self-learning force curve with continual adjustment e.g. summer-/winter operation
- Automatic optimisation of door operation through direct entry of measured operating forces
- Operation compliant with standards
- Pre-selectable door types via DIP switch
- Active braking for moving doors
- Countless setting and querying options via **SOMlink**
- Gear-saving soft start/stop
- Automatic end position detection in Door CLOSE when programming, the closing pressure can also be individually adapted to the structural conditions

## ADDITIONAL EQUIPMENT

Create your own optional value-added product



All accessories are easy to install via Plug and Play. Sockets are colour-coded and labelled.

\* Special fitting required

### Track

- The track unit (standard equipment) opens sectional doors up to a height of 2,500 mm, swing doors up to a height of 2,750 mm
- By extending the track, even taller doors can be opened (extension set # 10460V000)

### Additional connection options without spiral cable directly on carriage

- Connection for safety contact for the slip door
- Connection for safety contact strip OSE or 8k2

### Chain

- High-quality fixed chain (galvanic nickel-plated)
- Wear- and maintenance-free, pre-tensioned via springs with high tensile strength

### Ceiling mounting unit

- Flexible and versatile

### Roof control connection option

- Pulse button
- Warning light 24 V/DC, max. 25 watt
- 2- or 4-wire light barrier
- Additional socket light (Lumi base+)
- Additional socket relay
- Socket battery pack

**Set S 9060 base+** # 8700V000 **Set S 9110 base+** # 8500V000  
**Set S 9080 base+** # 8800V000  
 3-piece track including carriage, roof control, fixing material (bracket, attachment to header and ceiling mounting unit), push arm and door bracket, pre-programmed Pearl Vibe 4-command transmitter (# 4019V000)

MADE IN GERMANY



### 1 Lock # 1651V000

Locking magnet which mechanically blocks the motor in any position up to an attack force of 300 kg (certified), thereby improving the existing break-in protection. (mechanical locking mechanism of the operator)



### 2 Senso # 10371

For recording air humidity and temperature in the garage. The carriage automatically opens and closes the door a bit if necessary, ensuring perfect air circulation. This reduces the risk of mould formation.



### 3 Memo # 10373

Used to expand the memory to 450 transmitter commands. If service is required, the saved transmitters can be easily moved to a new carriage.



### Buzzer # 7043V000

Three functions in one product: The alarm buzzer recognises a break-in attempt and outputs a loud signal tone. The warning buzzer, on the other hand, outputs an acoustic signal during the closing process or optionally when the slip door is open.



### Lumi+ # 7041V000

Additional LED lighting for the roof control. It is switched in parallel with the lighting in the carriages and can be easily switched on and off using the light function by means of a hand-held sensor.



### Parking position laser # 10378

Gives optical assistance for perfectly positioning a vehicle in the garage. The laser is active during the opening process and the set light burning time.



### Relay # 7042V000

Additional relay for additional switching of a garage or courtyard light.



### Motion # S10343-00001

Uses a passive infrared sensor to detect the invisible thermal radiation of moving bodies (humans/animals, etc.) and reacts to them. The operator lighting (additional lighting/relay) switches on automatically for safe movement when the garage is entered.



### Accu # S10523-00001

Assumes the power supply of the operator for > 5 door cycles in the event of a power failure.